



WREATHS ACROSS AMERICA DAY – DECEMBER 17, 2022

Each year, Wreaths Across America coordinates wreath-laying ceremonies at more than 3,400 locations across the United States, at sea or abroad. We remember and honor all our military veterans that have paid the ultimate sacrifice for our freedoms.

We invite you to join Wreaths Across America by sponsoring a veterans' wreath at a cemetery near you, volunteering or donating to a local sponsorship group. Please visit WreathsAcrossAmerica.org to volunteer, donate, or sponsor a wreath to honor an American hero.



TOYS FOR TOTS

Hunt Military Communities proudly supports the U.S. Marine Corps Reserve Toys for Tots program each holiday season. Donation drops off stations will be available at several HMC communities across the nation to collect presents and toys for children in need.

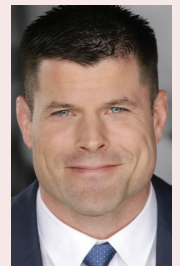
Toys for Tots is a 73-year-old national charitable program run by the U.S. Marine Corps Reserve that brings holiday joy to more than seven million disadvantaged children each season. HMC is proud to support this holiday tradition to give back to our communities in a safe and accessible way. The primary goal is to help bring joy to the season and send a message of hope and support to all those in need. Donations given to Toys for Tots directly impact children and families in communities throughout the country.

If you would like to make a donation or learn more about the program, please visit ToysForTots.org.

OUR CEO'S MESSAGE

Dear HMC Residents,

We'll be celebrating the beginning of a new year in just a few short weeks. During this holiday season and throughout the year, we appreciate the service and sacrifice you and your families make. With deployments or long training missions, our Service Members miss out on many special occasions during the holiday season. In support of our families, our communities are doing special service projects this holiday season to show our gratitude for all you do day in and day out. We are also supporting those in need. Donation drop-off stations have been established at many HMC communities across the nation to collect presents and toys for needy children as part of the U.S. Marine Corps Reserve Toys for Tots program. We are also encouraging employees and residents to participate in Wreaths Across America to support their wreath-laying efforts at military cemeteries across the country. On behalf of everyone here at Hunt Military Communities, I want to take this time to wish you all a very safe and happy Holiday season and a healthy and happy 2023.



Semper Fidelis,

Brian Stann
President and CEO
Hunt Military Communities

808-470-5400

@OhanaMarineMC

@OhanaMarineMilitaryCommunities

COMMUNITY ANNOUNCEMENTS

Merry Christmas from Ohana Military Communities!

Holiday Lighting and Yard Decorations:

Holiday lighting is authorized for use between 5:00 – 10:00 PM from Thanksgiving until the second week of January. Avoid overloading electrical circuits and extension cords or leaving lights on unattended. Gutter clips or similar clip devices are required for affixing exterior lighting--nails, screws, or tacks are not permitted. Roof decorations and lighting above the first-floor roofline are also not allowed. Should there be any damage to the home or the property, as well as any incident of injuries, residents are expected to accept all liability for each. Please contact your Resident Services Office if you have any questions or need more information.

COMMUNITY IMPROVEMENTS

Ohana Military Communities is committed to improving our communities. We will be completing an exterior home painting project in the following communities: Pa Honua IV, Kaluapuni, & Kapoho.

Ohana Military Communities will provide advance notice to each community prior to beginning any work. In preparation for the work to take place, we ask that you complete the following:

- Keep all windows closed for the duration of the project.
- During working hours, unlatch any fasteners for your window screens as SOME exterior windowsills will be worked on if needed.
- Please move objects such as patio furniture, signs or toys so that they do not touch the home and there is room for the contractors to work on the home. Any patio furniture can remain on the back patios or lanais and will be covered by the crew if needed.
- Please be aware that some work may hinder access to some entry-exit doors. However, this will be discussed with the resident prior, ensuring that one entry/exit is available.
- Please instruct all family members to stay clear of the work areas during the project.

We will be in frequent communication with you as the project moves along. Please do not hesitate to contact our office with any questions or concerns. We can be reached at 808-470-5400.



EMPLOYEE SPOTLIGHT

Kelii Wagner

Kelii is a Porter here at Ohana Marines Military Communities. Kelii enjoys cooking and ancient history. When asked what they like about their job, Kelii said, "The wide variety of experience and service that he is able to provide and gain."



FALL DECOR WINNER
Nate-Kimberly Smith

PET OF THE MONTH
Maria Rene Chen Pup's - Sakura

2022

DECEMBER

SUN	MON	TUE	WED	THU	FRI	SAT
				Civil Air Patrol Day 01 Drop Off Letter to Santa Starts Your Community Center 8:00 AM – 5:00 PM Spreading the Cheer Raffles Starts Community Center	Holiday Pet of the Month Starts 02 Facebook Trash / Bulk Trash Pick-up (Pa Honua & Hana Like)	03
04	Recycling Pick-up 05 (ALL)	Trash / Bulk Trash Pick-up 06 (Hawaii Loa, Heleloa, Kapoho, & Waikulu)	National Pearl Harbor Remembrance Day 07 Ornament Making Leasing Office 1:00 – 3:00 PM Trash / Bulk Trash Pick-up (Mololani, Kaluapuni, Mokolea, Nani Ulupau, & Ulupau)	08	Trash / Bulk Trash Pick-up 09 (Pa Honua & Hana Like)	10
Holiday Pet of the Month Ends 11 Facebook	Holiday Decorating Contest Starts 12 Facebook	Trash / Bulk Trash Pick-up 13 (Hawaii Loa, Heleloa, Kapoho, & Waikulu)	Trash / Bulk Trash Pick-up 14 (Mololani, Kaluapuni, Mokolea, Nani Ulupau, & Ulupau)	15	Drop Off Letter to Santa Ends 16 Your Community Center 8:00 AM – 5:00 PM Trash / Bulk Trash Pick-up (Pa Honua & Hana Like)	Wreaths Across America 17
First Night Of Hanukkah 18 Holiday Decorating Contest Ends Facebook	Recycling Pick-up 19 (ALL)	Trash / Bulk Trash Pick-up 20 (Hawaii Loa, Heleloa, Kapoho, & Waikulu)	First Day Of Winter 21 Trash / Bulk Trash Pick-up (Mololani, Kaluapuni, Mokolea, Nani Ulupau, & Ulupau)	22	Spreading the Cheer Raffles Ends 23 Community Center Trash / Bulk Trash Pick-up (Pa Honua & Hana Like)	Christmas Eve 24
Christmas Day 25	Last Night Of Hanukkah 26 OFFICE CLOSED	Trash / Bulk Trash Pick-up 27 (Hawaii Loa, Heleloa, Kapoho, & Waikulu)	Trash / Bulk Trash Pick-up 28 (Mololani, Kaluapuni, Mokolea, Nani Ulupau, & Ulupau)	29	Trash / Bulk Trash Pick-up 30 (Pa Honua & Hana Like)	New Year's Eve 31





NATIONAL PEARL HARBOR REMEMBRANCE DAY - DECEMBER 7TH

COMMUNITY IMPROVEMENTS

Ornament Making

Leasing Office – December 7th, 1:00 – 3:00 PM (due to limited space, unable to add to community calendar)

Letters to Santa

Don't forget to drop off your letters to Santa at your Community Center Office – December 1st-16th

Spreading Cheer Holiday Raffle

Community center to draw (2x) prizes per week - December 1st – 23rd (due to limited space, unable to add to community calendar)

Marines Tenant Satisfaction Survey

Closes December 16th– Check your emails and be sure to complete yours.

CONTACT INFORMATION

Office Hours: Monday, Tues, Thurs, Friday 8:00 AM – 5:00 PM, Wednesday 9:00 AM – 5:00 PM

Office Number: 808-470-5400

Email: HawaiiLeasing@HuntCompanies.com
MakaiRSO@HuntCompanies.com
MananaRSO@HuntCompanies.com
MaukaRSO@HuntCompanies.com

Facebook: @OhanaMarineMilitaryCommunities

Website: OhanaMarineCorpsCommunities.com

MEET OUR FRIENDLY STAFF

Leslie Smith

Community Director

Ashley Box

Community Manager

Angel Peila

Community Manager

Ashley Maples

Leasing Manager

Lucy King

Leasing Manager

Kelly Rogers

Leasing Specialist

Michaela Belcher

Leasing Specialist

Alisha Estes

Leasing Specialist

Courtney Hawk

Leasing Specialist

Cierra Kouns

Residential Service Specialist
Waikulu Office

Lauren McNulty

Residential Service Specialist
Waikulu Office

Amber Mackey

Residential Service Specialist
Waikulu Office

Dania Gomez

Residential Service Specialist
Waikulu Office

Maria Diaz

Residential Service Specialist
Waikulu Office

Mariah Marez

Residential Service Specialist
Mololani Office

Jasalyn Lacy

Residential Service Specialist
Mololani Office

Brittany Preston

Residential Service Specialist
Mololani Office

Ivette Pacheco

Residential Service Specialist
Mololani Office